

FCC Verification

This equipment has been tested and found to comply with the limits for a Class B digital device, pursuant to Part 15 of the FCC Rules. These limits are designed to provide reasonable protection against harmful interference in a residential installation. This equipment generates, uses and can radiate radio frequency energy and, if not installed and used in accordance with the instructions, may cause harmful interference to radio communications. However, there is no guarantee that interference will not occur in a particular installation. If this equipment does cause harmful interference to radio or television reception, which can be determined by turning the equipment off and on, the user is encouraged to try to correct the interference by one or more of the following measures:

- Reorient or relocate the receiving antenna.
- Increase the separation between the equipment and receiver.
- Connect the equipment into an outlet on a circuit different from that to which the receiver is connected.
- Consult the dealer or an experienced radio/TV technician for help.

FCC Part15C+RSS247

To assure continued FCC compliance:

1. Any changes or modifications not expressly approved by the grantee of this device could void the user's authority to operate the equipment.
2. This equipment complies with FCC radiation exposure limits set forth for an uncontrolled environment. This equipment should be installed and operated with minimum distance 20cm between the radiator & your body.

IC

This device complies with Industry Canada license-exempt RSS standard(s). Operation is subject to the following two conditions: (1) this device may not cause interference, and (2) this device must accept any interference, including interference that may cause undesired operation of the device. This equipment complies with IC radiation exposure limits set forth for an uncontrolled environment. This equipment should be installed and operated with minimum distance 20cm between the radiator and your body.

This radio transmitter (IC: 3653A-ASP603W) has been approved by Innovation, Science and Economic Development Canada to operate with the antenna types listed below, with the maximum permissible gain indicated. Antenna types not included in this list that have a gain greater than the maximum gain indicated for any type listed are strictly prohibited for use with this device.

Antenna Type: Dipole antenna
Model Name: Q0211
Gain (Peak): 2 dBi

French:

Cet appareil radio est conforme au CNR-247 d'Industrie Canada. L'utilisation de ce dispositif est autorisée seulement aux deux conditions suivantes : (1) il ne doit pas produire de brouillage, et (2) l'utilisateur du dispositif doit être prêt à accepter tout brouillage radioélectrique reçu, même si ce brouillage est susceptible de compromettre le fonctionnement du dispositif. Cet équipement est conforme aux limites d'exposition aux rayonnements IC établies pour un environnement non contrôlé. Cet équipement doit être installé et utilisé avec un minimum de 20 cm de distance entre la source de rayonnement et votre corps.

© Copyright 2019 Metra Electronics

The information contained herein is subject to change without notice. This document contains proprietary information protected by copyright law. No part of this document may be photocopied or reproduced without prior written consent.

metrahometheater.com

HELIOS®

AS-P-603W

Home Theater Smart Power Center



User Guide

Model AS-P-603W

TABLE OF CONTENTS

Introduction	2
Features	2
Safety Information	2
Package Contents	2
Installation	3
Descriptions	4
Operation	5
LCD Control Panel	5
LED Indicators	5
Remote Trigger Operation.....	5
Specifications	6
App Setup	7
App Operation	10

INTRODUCTION

Thank you for purchasing the AS-P-603W. Your new home theater power solution provides clean AC power to sensitive home theater electrical equipment. Four smart outlets, four switched outlets and one always on front outlet (nine total) provide premium surge protection and noise filtering. Additional connections supply two pairs of DSS/coaxial connections for cable protection.

Features

- Three kinds of filter circuitry isolates and protects digital, analog and high current equipment.
- LCD display shows voltage and amperage levels.
- System provides overload protection with a 120V/15A electrical rating.
- Remote 110V and 12V DC trigger allows remote turn on/off of switched outlets.
- DSS/coax surge protection provided.
- A total of nine outlets includes 4 switched and 4 smart and 1 front always on.

Safety Information

- To reduce the risk of electrical shock, unplug the AS-P-603W and allow it to cool before cleaning.
- There are no replaceable parts in the AS-P-603W. Do not attempt to disassemble this unit for any reason.
- Use in an indoor, dry location only.

Package Contents

- Home Theater AS-P-603W surge protector/conditioner
- This User Manual

INSTALLATION

1. LCD Display - Monitor the AS-P-603W's main functions.
2. LED Power Indicators – Monitor ground, protection and switched power statuses.
3. USB C - 3A USB C connection for charging devices.
4. USB A - 2.4 Amp USB A connection for charging devices.
5. Power Switch - Switches on and off the four (4) switched outlets on the back.
6. Always on Outlet - Always on AC outlet.
7. Wi-Fi Antenna - Provides connection to Wi-Fi for remote control from Tuya App.
8. Wi-Fi Activity LED - Shows Wi-Fi status and used during Tuya App setup.
9. Wi-Fi Reset button - Used to reset the Wi-Fi connection.
10. Smart Outlet Status LEDs - Shows smart outlet on/off state.
11. Smart AC Outlets - Four (4) Smart AC Outlets that can be controlled remotely by the Tuya App.
12. Switched AC Outlets - Four (4) switched AC outlets that are controlled by the power switch on the front of the AS-P-603W.
13. DSS/Coax Line Input/Output – Protect coaxial cable lines from power surges and spikes that can disturb and damage your equipment. Connect your cable TV, satellite TV, antenna, HDTV, broadband or other coaxial cable lines.
14. DC IN – Control the switched outlets using the remote trigger function of another power management unit.
15. 15-Amp Overload Reset-able Circuit Breaker – Provides overload protection with a manually recoverable function.
16. Power Cord - 14 gauge insulated power cord.
17. Includes detachable rack mount ears and thumb screws for temporary mounting. This power center for TEMPORARY MOUNTING ONLY. **NOT INTENDED FOR PERMANENT MOUNTING.**

Remote Operation

Download App titled "Tuya Smart" from Google Play store or Apple app store for easy remote operation of the 4 smart outlets

DESCRIPTIONS

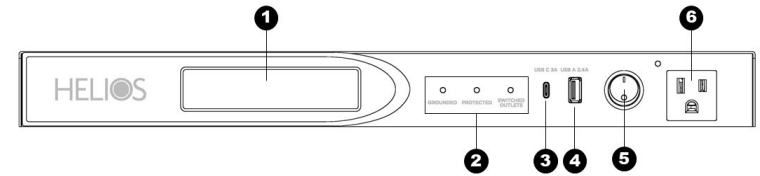


Figure 2 - Front View Controls and Indicators

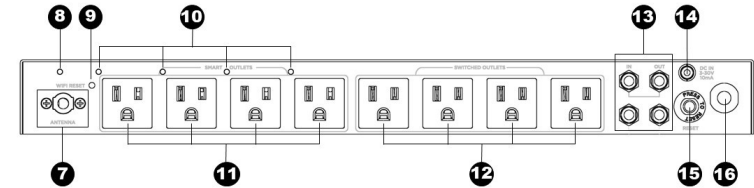
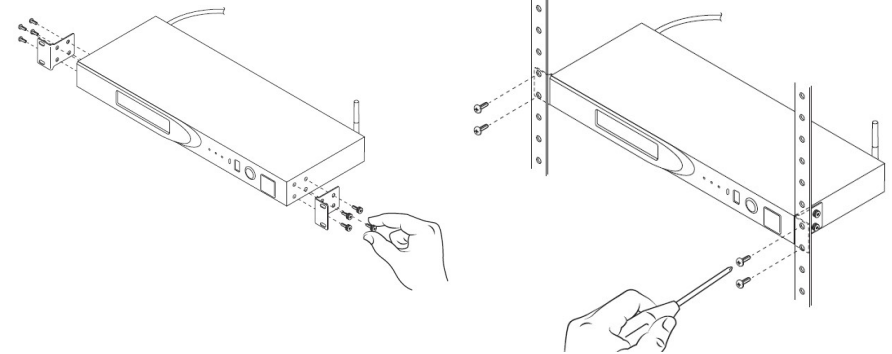


Figure 3 - Rear View Controls



Step 1. Use included thumb screws to attach rack ears to power center.

Step 2. Install screws in the upper and lower mounting holes to secure power center to the rack.

Figure 4 - Optional Rack ear installation

OPERATION

LCD Panel

The AS-P-603W is equipped with an LCD Panel (Figure 5) that allows the user to monitor input voltage and output current.



Figure 5 - LCD Panel

- “VOLT” indicates the input voltage from the AC wall outlet.
- “AMPS” indicates the output current from the outlet banks.

LED Indicators

The LED indicators on the front panel (Figure 6) allow you to monitor important power and safety information.



Figure 6 - Front Panel LED Indicators

- “GROUNDED” indicates the status of the AC outlet. Green indicates that the AC wall outlet is properly grounded.
- “PROTECTED” indicates the status of the Power Solution surge protection. Orange indicates that the surge protection is turned on.
- “SWITCHED POWER” indicates whether the “Switched” outlets are ON or OFF.

Remote Trigger Operation

This AS-P-603W can be controlled remotely by another power solution equipped with a remote trigger out feature. To use remote trigger control, connect the remote DC cable from the “DC OUT” connection on the power solution equipped with remote trigger out to the “DC IN” connection (Figure 7) on the AS-P-603W.



Figure 7 - DC IN Connection

SPECIFICATIONS

Width	482.6mm	
Height	44mm	
Length	220.1mm	
Weight	3.5kgs	
Power Cord	14 AWG with 36 degree angle (8 Feet)	
Electrical Rating	120V/15A	
Clamping Voltage	L-N 400V, L-G 500V, N-G 500V	
Surge Energy Joule Rating	2160J	
Maximum Peak Spike Current	144000A	
Maximum Spike Voltage	6KV	
EMI/RFI Noise Filter	X2 Capacitor (uF)	1.0uF*1; 0.22uF*1
	Coil (T)	1mH*1
	Frequency (KHz)	150KHz~100MHz
	Attenuation (dB)	up to 65dB
DC Trigger Input	Jack	ψ 3.5
	Voltage	3~30V
	Current Requirement	10mA
USB Charger	Total Output	Total 5V/4.8A USB-A Output up to 5V/2.4A USB-C Output up to 5V/3A
DSS/COAX Cable Protection	Surge Arrestor	Gas Tube
	Breakdown Voltage	<75V
	Insertion Loss @10MHz	<0.1dB
	RF Connectors	3 Pairs, Gold finish

NOTE: Specifications subject to change without notice.

APP SETUP

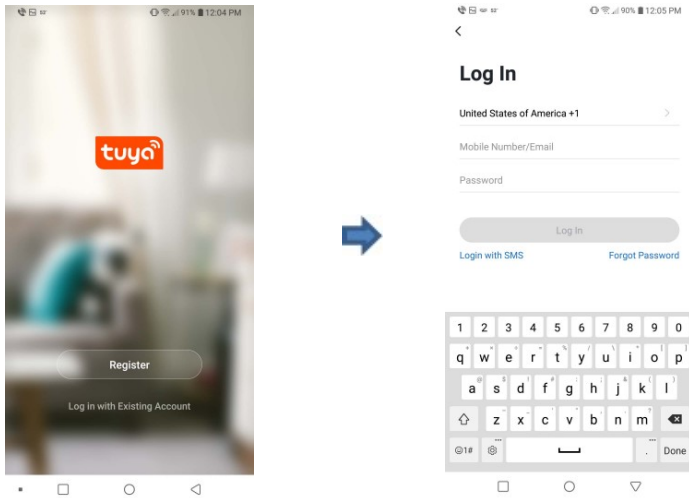
Device setup for app connection

Press the wifi reset button for 8 seconds or until you see the wifi LED (green) blinking and then release the wifi reset button to connect to the app.



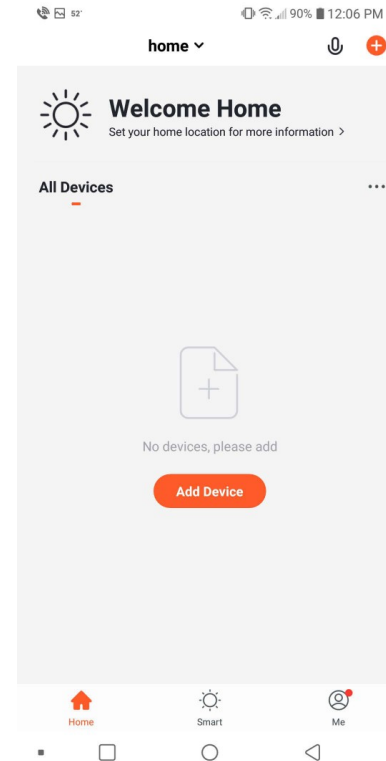
App installation & setup

1. Connect Android or iOS device to wifi router
2. Download and install Tuya app  from Google play store or Apple App store.
3. Register new account or login to existing account.

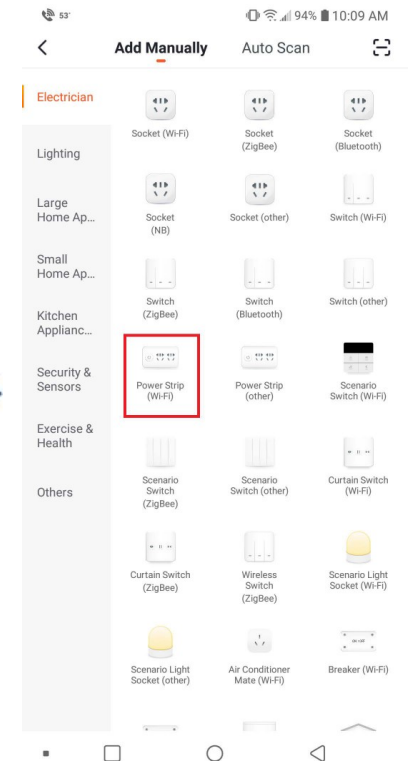


APP SETUP

4. After logging into the app, add the device.

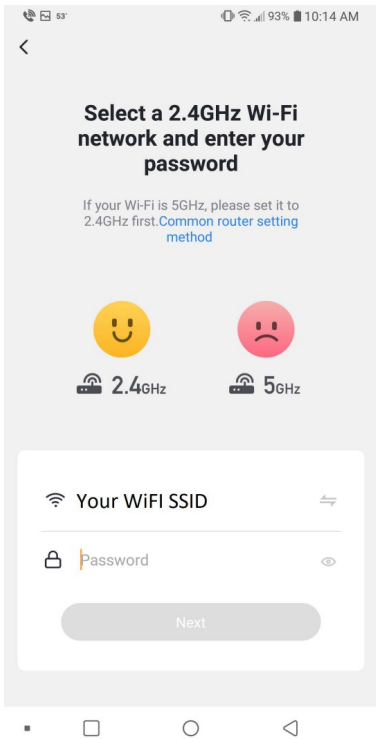


5. Select "Power Strip (Wi-Fi)"



APP SETUP

6. Enter WiFi credentials for 2.4GHz Network.

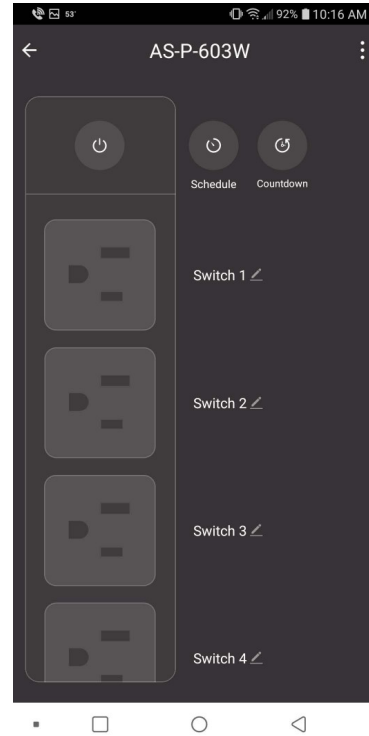


7. Device added successfully. Select device.



APP OPERATION

8. Turn outlets on or off by tapping individual or all outlets. Tap Schedule to create schedules per outlet.



9. Set schedule per outlet by time.

