
Sony Art Frame Gallery App Installation

USER GUIDE



Picture perfect sound.®

NOTE: Your Studio Frame will conceal your IR receiver. If you intend to use the Sony remote, refer to the TV manual to enable the bluetooth remote connection. You will need to add a simple remote IR extender in order to enable Power ON/OFF.

Overview

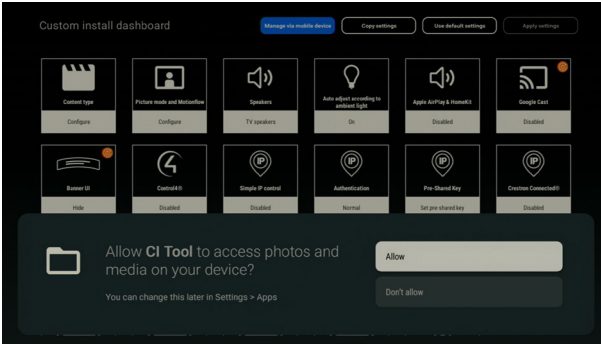
1. To Launch our custom install dashboard from the home screen, on your remote tap **INPUT** → tap **MUTE** → hold **MUTE**
2. Insert the provided USB memory stick that comes preloaded with the SONY Art Frame Gallery app into the upper left USB port. If the TV needs to update firmware, the update will be started automatically. Otherwise, when the "**System Software update**" screen shows up, select **CLOSE**.
3. Select **INSTALL APK** and install "**ArtFrameGallery_ver_2.apk** for both Sony Bravia 7 and Sony BRAVIA 9 TVs.
4. In the CI Tool pop up, select **SETTINGS** to "**Install unknown apps**". Select "**CI Tool**", toggle "On" to change to **ALLOWED**. Select **UPDATE** from the Confirmation pop up, then select **DONE**. Select "**Okay**" to accept the Privacy Policy and End User License Agreement. Select "**Allow**" to grant access to photos and media on the device. Select "**Okay**" to install future updates. Select "**BraviaFrmApp**" and toggle button to **Allow**. Return to the Home Screen and launch the Art Frame Gallery App.
5. Once you launch the Art Frame Gallery App "**main.5.com.sony.dtv.frame.0b2**" will be automatically copied. Exit to the Home Screen and relaunch the Art Frame Gallery App. Remove the provided USB memory stick and plug the USB of the Interface Board in its place.
6. Enable Simple IP Control by selecting **SETTINGS**. From here, select **Network & Internet**, then scroll down and select **Home Network**. You will see an option for IP Control. Select this, then select to toggle on **Enable Simple IP Control**. A prompt will tell you that this option may increase power consumption more than the normal configuration. Select **OK**.
7. Reboot the TV by holding down the power button on the remote, then select **Restart**.

8. Once the TV is back to the Home Screen, launch the Art Frame Gallery App and select the Settings Icon. Toggle **Enable Light Sensor** and set the Light Sensor Threshold level below light sensor level. If the Motion Sensor is enabled, the Motion Sensor will detect movement according to the set time out range to turn the app on or off. Set the Motion Sensor time to 30 minutes (recommended).
9. Mat color and size can also be changed in Settings.
10. Once preferred settings have been made, power down the TV by pressing the **POWER** button on the remote 1x. The Art Frame Gallery App is now activated.
11. On the home screen, open the **Eco Dashboard app**. Select the desired setting in the **“Shut Off When Watching”** menu. By default, the TV will turn off 24 hours after displaying artwork if there is no activity. We recommend setting this to **“Never”**. Since the Studio Frame blocks the built in TV sensor, you must turn off **“Auto Adjust Picture According to Ambient Light”**.
12. For more detailed instructions regarding the Art Frame Gallery App, please continue on to the following pages of the manual. To add personal pictures via USB Drive, please refer to step 8 on page 13.

For CI Dealer assistance, please visit www.sonypremiumhome.com/find-a-rep/index.php to find your local Sony CI Representative

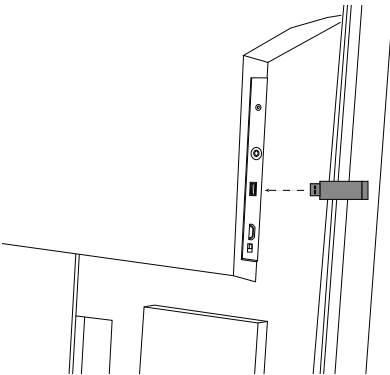
1. Launch CI Tool App

To Launch our Custom Install dashboard from the Home Screen, on your remote tap **INPUT** → tap **MUTE** → hold **MUTE** and follow the popup instructions making sure to click **“Allow”** to give access rights.



2. Insert Provided USB Memory Stick into the USB Port in the Back of the TV

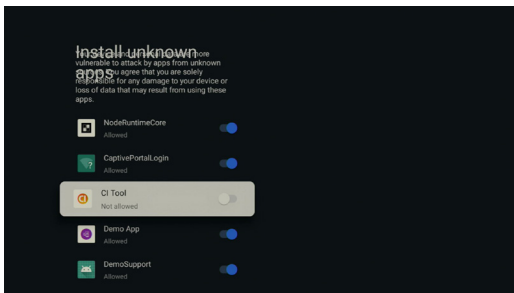
Access the back of the display, insert the provided USB memory stick that comes preloaded with the SONY Art Frame Gallery app into the upper left USB port. Wait for the TV to detect the USB.



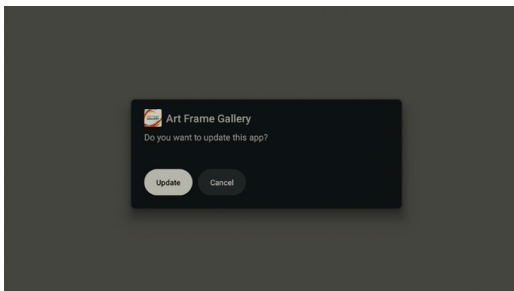
NOTE: When you insert the USB memory stick into the TV, it will automatically check for updates to the TV firmware. If an update is needed, it will be started automatically. If an update is not needed, a **“System Software Update”** screen will show up. Please read and select **“Close”**.

3. APK Install (cont'd)

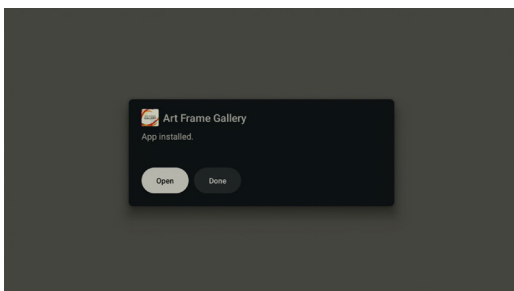
d) The “Install Unknown Apps” menu will appear. Select “**CI Tool**” and toggle the button to change from “**Not Allowed**” to “**Allowed**”.



e) Select “**Update**” from the Confirmation Pop-Up menu

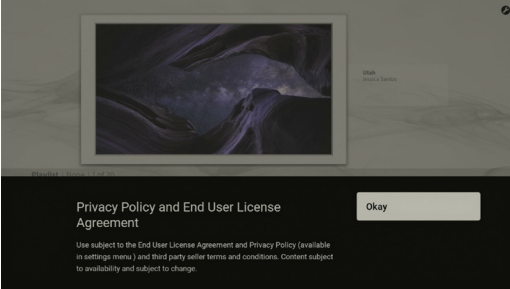


f) Wait for the installation to complete, then select “**Done**”. The **Art Frame Gallery App** will open.

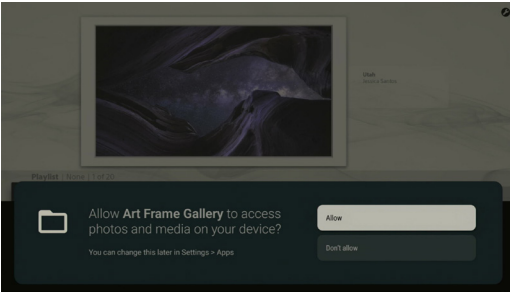


4. Install Art Frame Gallery App

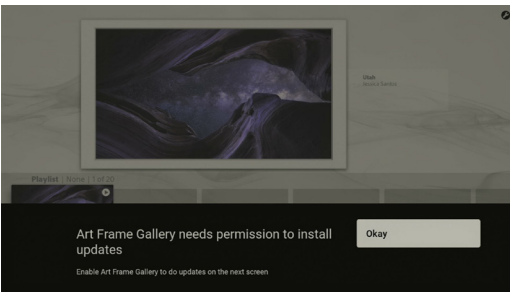
a) Select **“Okay”** to accept the Privacy Policy and End User License Agreement



b) Select **“Allow”** to grant access to photos and media on the device

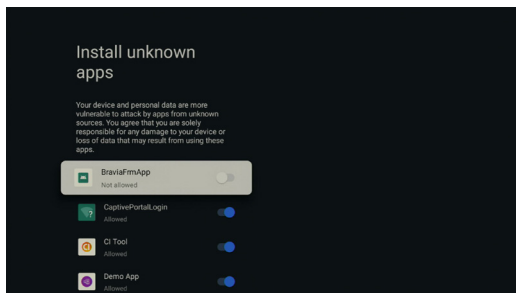


c) Select **“Okay”** to install future updates

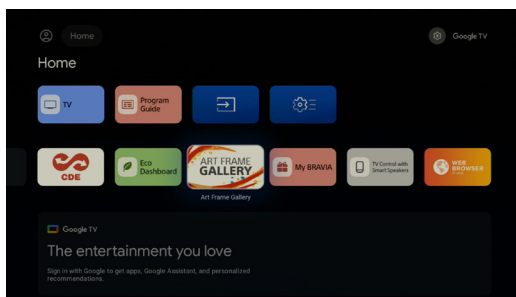


4. Install Art Frame Gallery App (cont'd)

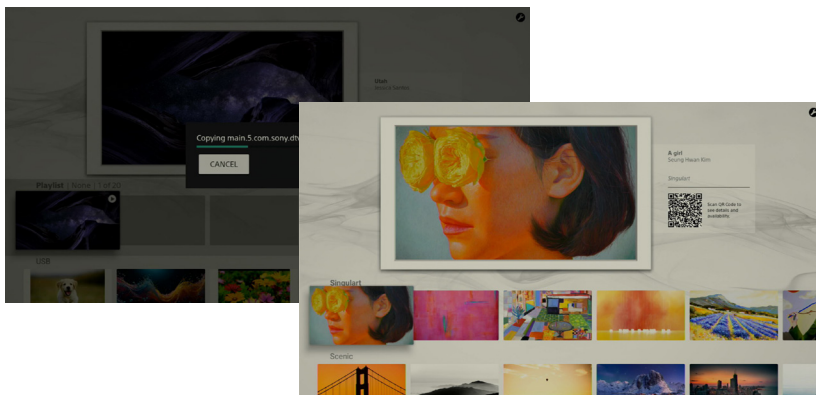
d) Select **“BraviaFrmApp”** and toggle button from **Not Allowed** to **Allow**



e) Return to the Home Screen and launch the Art Frame Gallery App

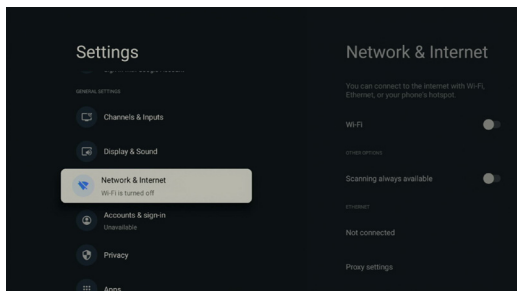


f) Once you launch the Art Frame Gallery App **“main.5.com.sony.dtv.frame.0b2”** will be automatically copied. Once finished exit to the Home Screen and relaunch the Art Frame Gallery App to view your files. Remove the provided USB memory stick and plug the USB of the Interface Board in its place.

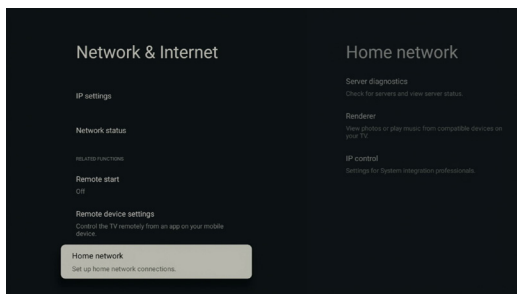


5. Enable Simple IP Control

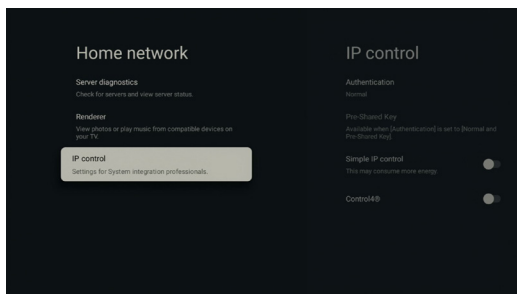
a) Go to the **TV Settings Menu** and scroll down to **Network & Internet** and press **ENTER**



b) Scroll down to **Home Network** and press **ENTER**

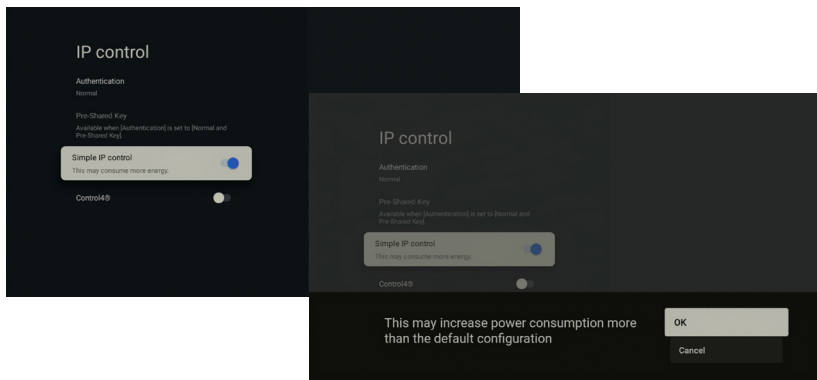


c) Scroll down to **IP Control** and press **ENTER**

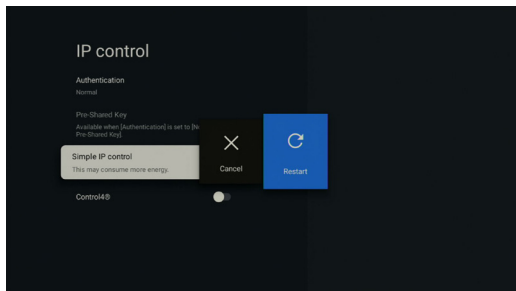


5. Enable Simple IP Control (cont'd)

d) Scroll down to **Simple IP Control** and press **ENTER**. Press **OK** on the dialog box.



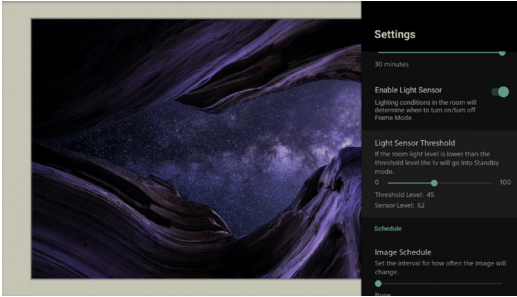
e) Reboot the TV by holding down the power button on the remote, then select **Restart**



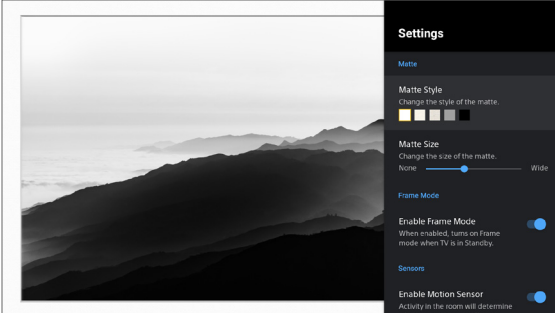
6. Art Frame Gallery App Settings

a) Once the TV is back to the Home Screen, launch the Art Frame Gallery App and select the “**Settings Icon (Wrench)**” on the top right corner of the gallery page.

b) Toggle **Enable Light Sensor** and set the **Light Sensor Threshold** level below light sensor level. If the Motion Sensor is enabled, the Motion Sensor will detect movement according to the set time out range to turn the app on or off. Set the Motion Sensor time to 30 minutes (recommended).



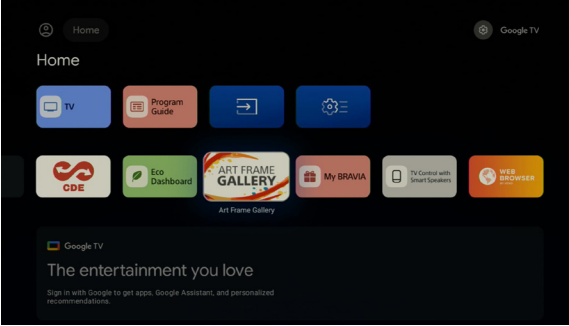
c) Mat color and size can also be changed in **Settings**.



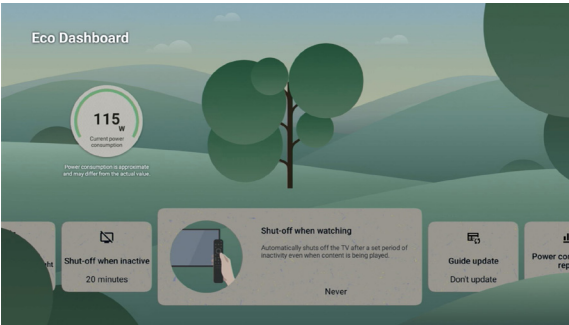
d) Once preferred settings have been made, power down the TV by pressing the **POWER** button on the remote 1x. The **Art Frame Gallery App** is now activated.

7. Set Eco Dashboard settings

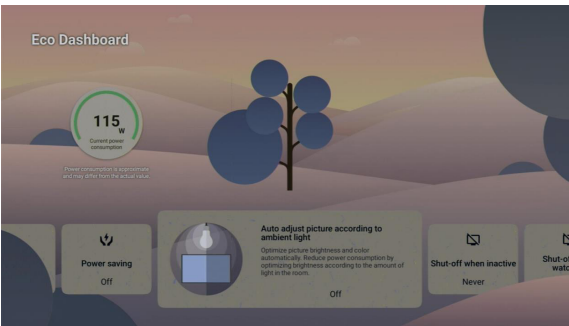
a) Launch the **Eco Dashboard** app from the Home screen.



b) Choose your desired setting in the **“Shut Off When Watching”** menu. By default, the TV will shut off 24 hours after artwork is displayed if there is no activity. **NOTE:** We recommend setting this to **NEVER**.



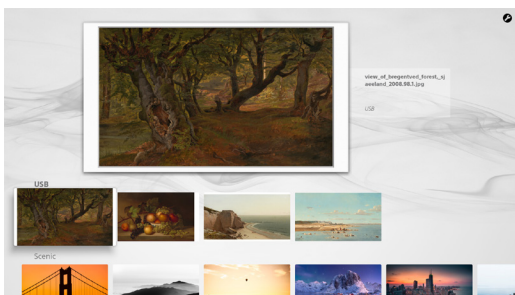
c) Since the Studio Frame hides the TV’s built-in sensor, you must **TURN OFF** the **Auto Adjust Picture** setting.



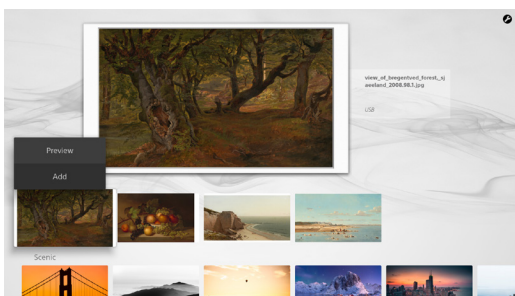
8. Adding Your Own Artwork

a) Insert a USB into the back of the display with your own artwork (artwork files must be JPGs, located in the root folder of the drive).

b) Open the Sony Art Frame Gallery App. You will see your artwork in the Gallery row labeled **“USB”** within the app.



c) Add your artwork to the Playlist by selecting the image, and choosing **“Add”** from the menu. For best results, images should be formatted to a 16 x 9 aspect ratio.





715 W. Ellsworth Road Ann Arbor, Michigan 48108 | 1.888.213.5015 | www.leonspeakers.com

Picture perfect sound.®