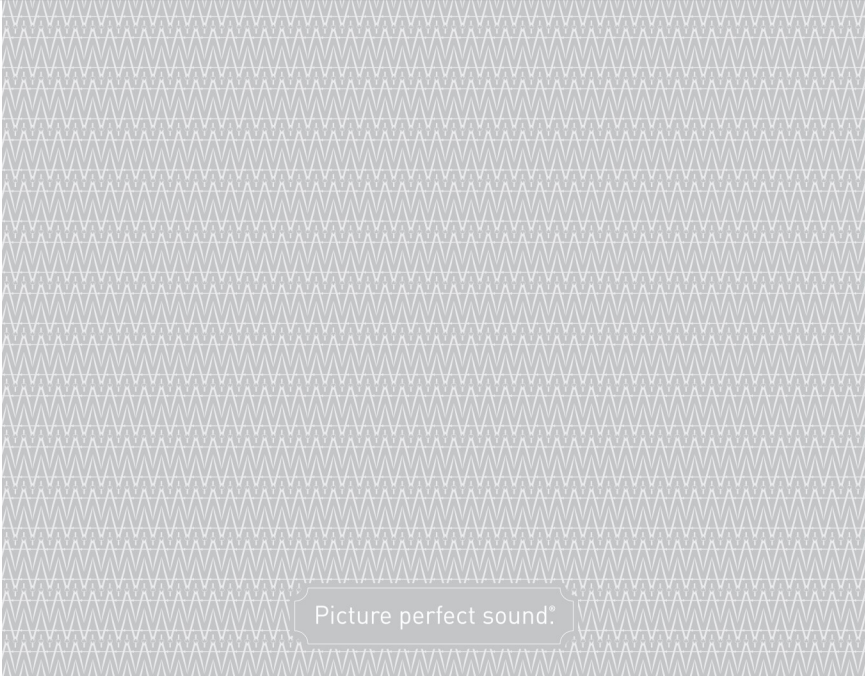


Sony Art Frame Gallery App Installation

USER GUIDE



Picture perfect sound®

To add personal pictures via USB Drive, please refer to step 8 on page 13.

NOTE: Your Studio Frame will conceal your IR receiver. If you intend to use the Sony remote control, refer to the TV manual to enable the bluetooth remote connection. Additionally, you will need to add a simple remote IR extender in order to enable Power ON/OFF.

For CI Dealer assistance, please visit:
<https://www.sonypremiumhome.com/find-a-rep/index.php>
To find your local Sony CI Representative

OVERVIEW

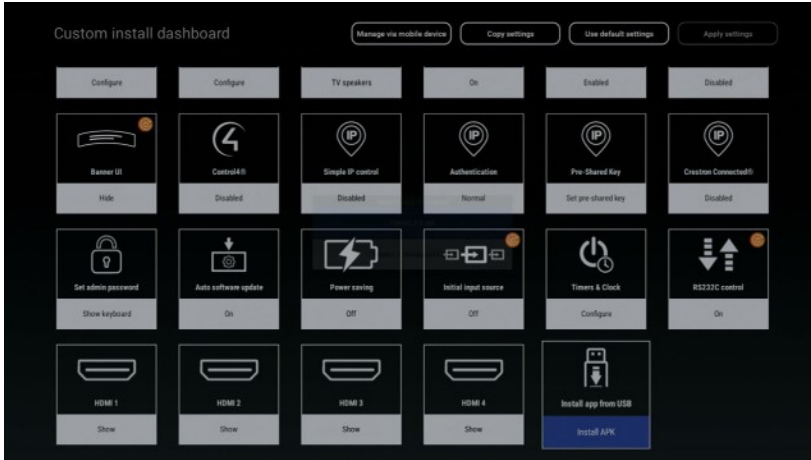
Find detailed Instructions on the following pages.

1. To launch your custom install dashboard from the homescreen, on your remote tap INPUT -> tap MUTE -> then press and hold MUTE
2. Insert the provided USB stick that comes preloaded with the SONY Art Frame Gallery app into the upper right USB port. If the TV needs to update firmware, the update will be started automatically. Otherwise, when the "System Software update" screen shows up, select CLOSE.
3. Select "Install APK" and select the appropriate file for your model TV.
4. In the CI Tool pop up, select SETTINGS to "Install unknown apps".
5. Select "CI Tool", toggle "On" to change to ALLOWED.
6. Select UPDATE from the Confirmation pop up, then select DONE.
7. Enable Simple IP Control by selecting SETTINGS. From here, select NETWORK & INTERNET, then scroll down and select HOME NETWORK. You will see an option for IP Control. Select this, then select to toggle on Enable Simple IP Control. A Prompt will tell you that this option may increase power consumption more than the normal configuration. Select OK.
8. Reboot your TV using the remote.
9. Launch the Art Frame Gallery App from Home menu. Select "Okay" to accept the privacy policy. Select "Allow" at the prompt, "Allow Art Frame Gallery to access photos, media, and files on your devices?" Select "Okay" at the prompt to allow updates.
10. When the Install Unknown Apps menu appears, select "Art Frame Gallery" and toggle to ON to allow the app to install.
11. Relaunch the Art Frame Gallery app from the home screen. The app will begin the process of importing images.
12. After the import is completed and the contents of the gallery are displayed, remove provided USB stick.
13. On the home screen, open the Eco Dashboard app.
14. Select the desired setting in the "Shut Off When Watching" menu. By default, the TV will turn off 24 hours after displaying artwork if there is no activity. We recommend setting this to "Never".
15. Since the Studio Frame blocks the built in TV sensor, you must turn off "Auto Adjust Picture According to Ambient Light".
16. Launch the Art Frame Gallery app from the home screen. Once open, select the settings icon. From here, you can adjust sensor levels.
17. We recommend setting the light threshold level below light sensor level. If the motion sensor is enabled, the motion sensor will detect movement according to the set time out range to turn the app on or off.
18. For more detailed instructions regarding the Art Frame Gallery App, please continue on to the following pages of the manual. To add personal pictures via USB Drive, please refer to step 8 on page 12.

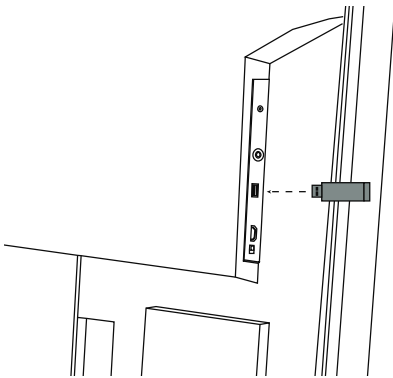
App Installation Instructions

1. Launch CI Tool App

Press the following keys on your Sony TV remote:
tap INPUT -> tap MUTE -> hold MUTE until Custom Install Dashboard Opens.



2. Insert Provided USB Memory Stick into the USB Port in the Back of Your TV.

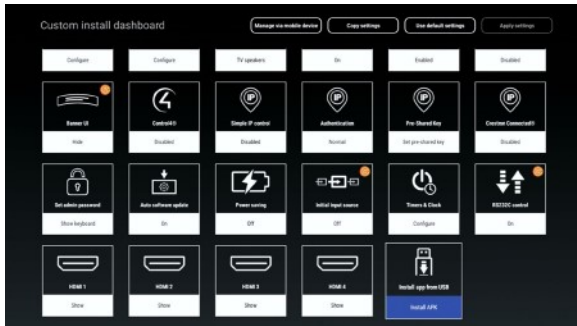


NOTE: When you insert the USB drive into the TV, it will automatically check for updates to the TV firmware. If an update is needed, it will be started automatically. If an update is not needed, a "System Software Update" screen will show up. Please read and select [Close].

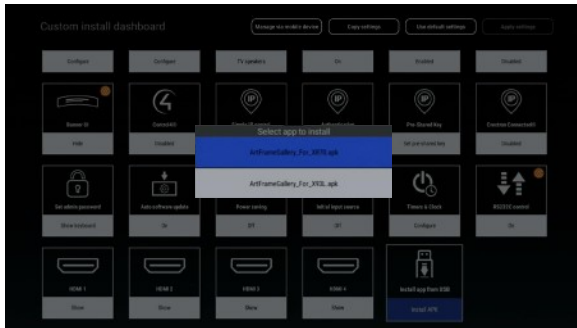
App Installation Instructions

3. APK Install

a) Select **INSTALL APK**.

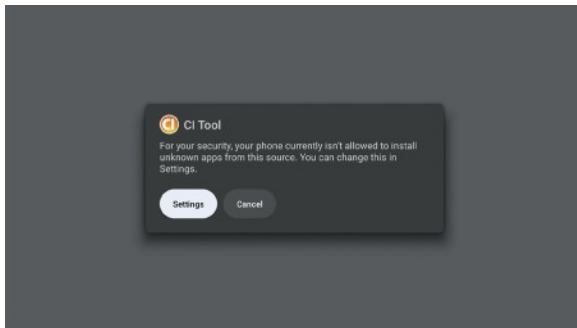


b) Select the appropriate file name to install the app from the USB.



NOTE: You must select the App that corresponds with your TV model. The two different installations are not interchangeable.

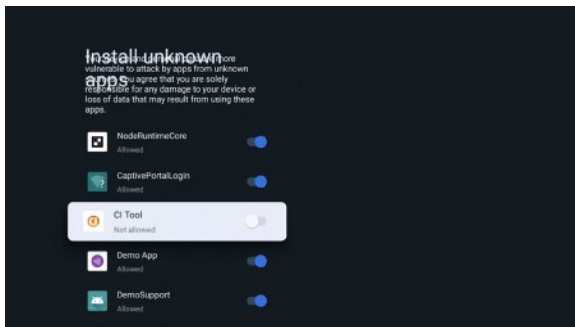
c) When the **CI Tool** pop-up appears, select **SETTINGS**.



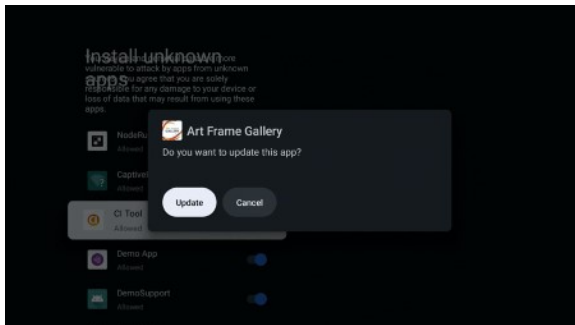
App Installation Instructions

3. APK Install (continued)

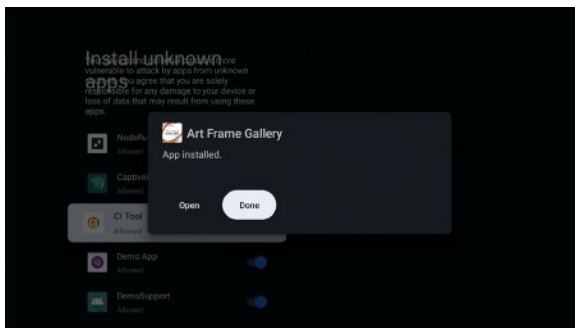
d) The “Install Unknown Apps” menu will appear. **SELECT** “**CI TOOL**” and toggle the button to change from “**Not Allowed**” to “**Allowed**”.



e) **SELECT** “**UPDATE**” from the Confirmation Pop-Up menu.



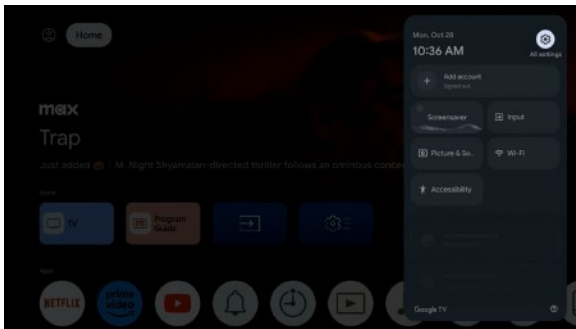
f) Wait for the installation to complete, then **SELECT** “**DONE**”.



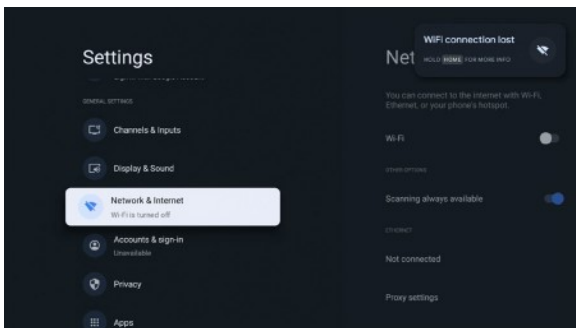
App Installation Instructions

4. Enable Simple IP Control (Required)

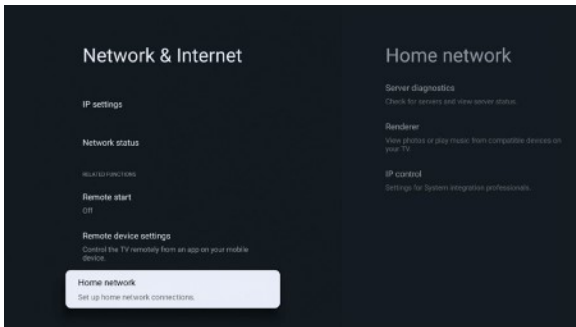
a) SELECT "SETTINGS" from the main menu.



b) Navigate down to Network & Internet and press ENTER.



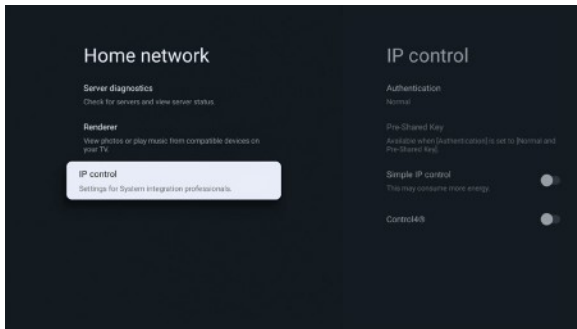
c) Scroll down to Home Network and press ENTER.



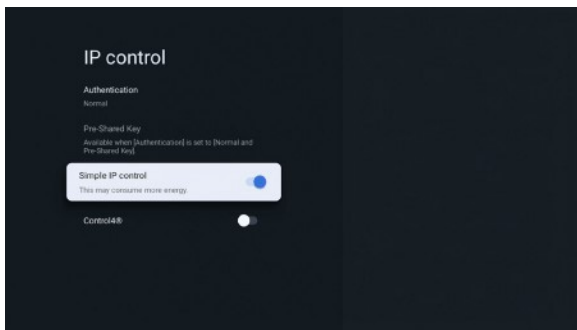
App Installation Instructions

4. Enable Simple IP Control (continued)

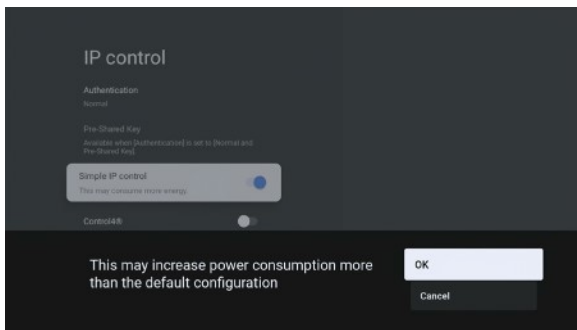
d) Navigate down to IP control and press ENTER.



e) Scroll down to Simple IP control and press ENTER.



f) Press OK on the dialogue box, then REBOOT YOUR DISPLAY using the Remote.



NOTE: To reboot your TV, press and hold the Power button on the remote. Then select "RESTART" (you will need to add a simple remote IR extender to enable Power ON/OFF).
Or, reboot by removing the AC code, then re-inserting the AC code.

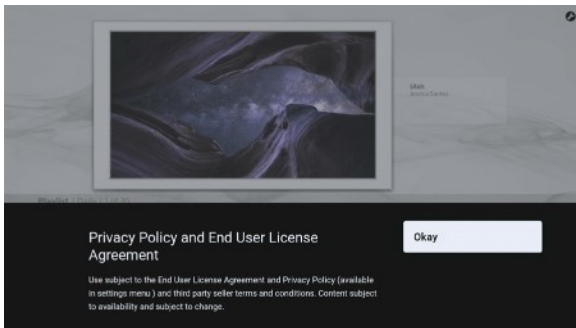
App Installation Instructions

5. Art Frame Gallery Settings

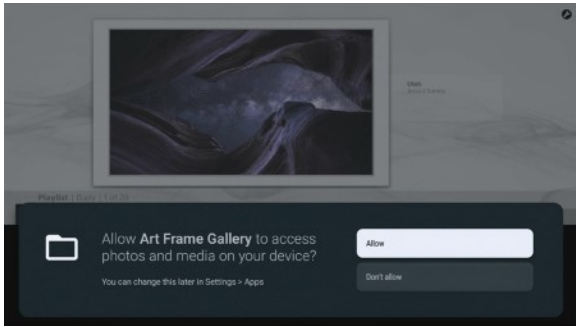
a) Launch the “ART FRAME GALLERY” app from the Home menu.



b) Select **Okay** to accept the Privacy Policy.



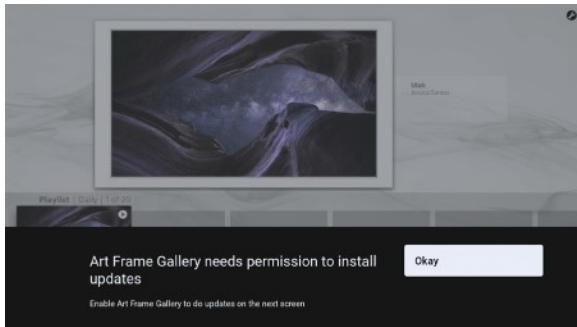
c) Select **Allow** to grant access to photos and media.



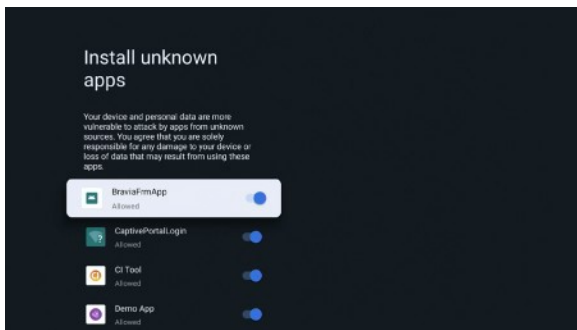
App Installation Instructions

5. Art Frame Gallery Settings (continued)

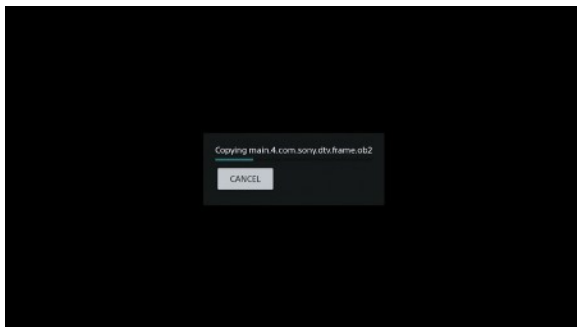
d) Select **Okay** to allow future updates.



e) Select "BraviaFrmApp" and toggle button to **Allow**.



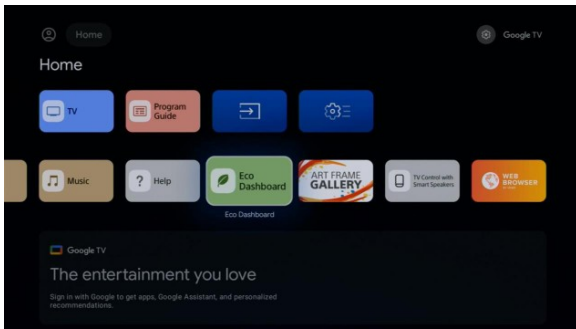
f) Relaunch the **Art Frame Gallery** app to begin the import process, then **Remove the USB Stick** from the back of the TV.



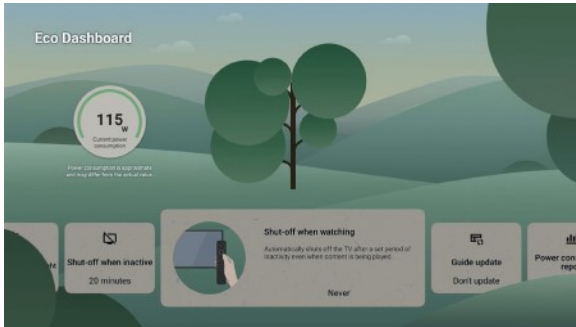
App Installation Instructions

6. Set Eco Dashboard settings.

a) Launch the Eco Dashboard app from the Home screen.

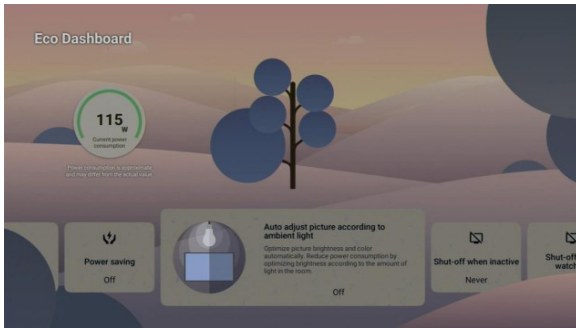


b) Choose your desired setting in the "Shut Off When Watching" menu. By default, the TV will shut off 24 hours after artwork is displayed if there is no activity.



NOTE: We recommend setting this to NEVER.

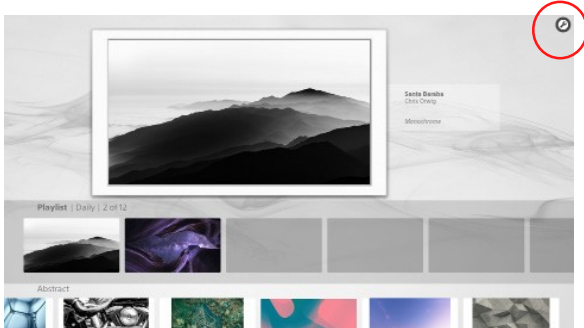
c) Since the Studio Frame hides the TV's built-in sensor, you must **TURN OFF** the Auto Adjust Picture setting.



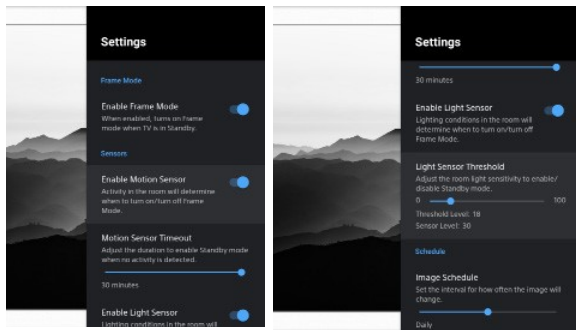
App Installation Instructions

7. Art Frame Gallery Customization

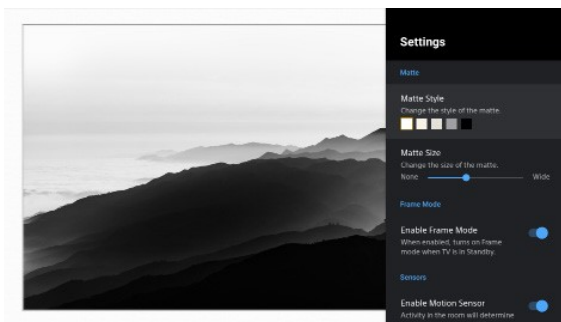
a) App settings can be changed by selecting the wrench icon in the top right corner of the gallery page.



b) We recommend setting the light sensor threshold below the light sensor level and setting the motion sensor time to 30 minutes. (The light sensor supersedes the motion sensor functionality.)



c) Matte color and size can also be changed in the app settings.

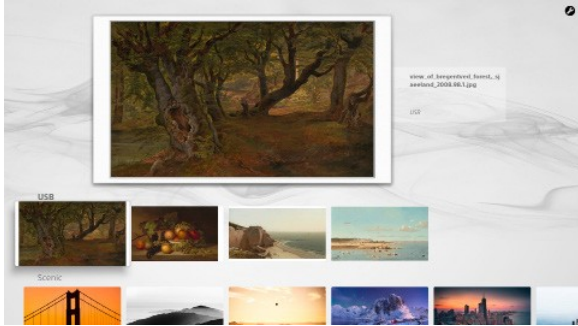


App Installation Instructions

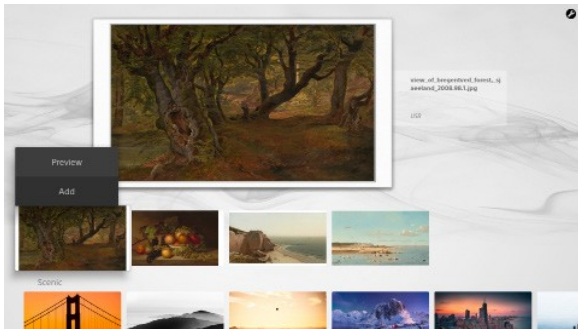
8. Adding Your Own Artwork.

a) Insert a USB into the back of the display with your own artwork (artwork files must be JPGs, located in the root folder of the drive).

b) Open the Sony Art Frame Gallery App. You will see your artwork in the Gallery row labeled "USB" within the app.



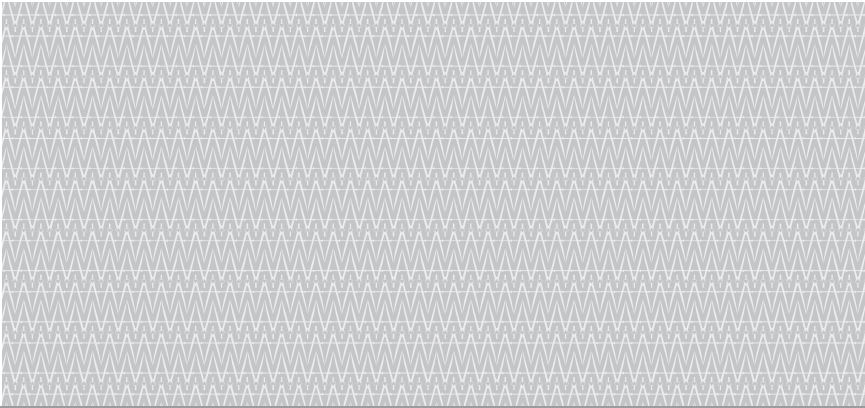
c) Add your artwork to the Playlist by selecting the image, and choosing Add from the menu. For best results, images should be formatted to a 16 x 9 aspect ratio.



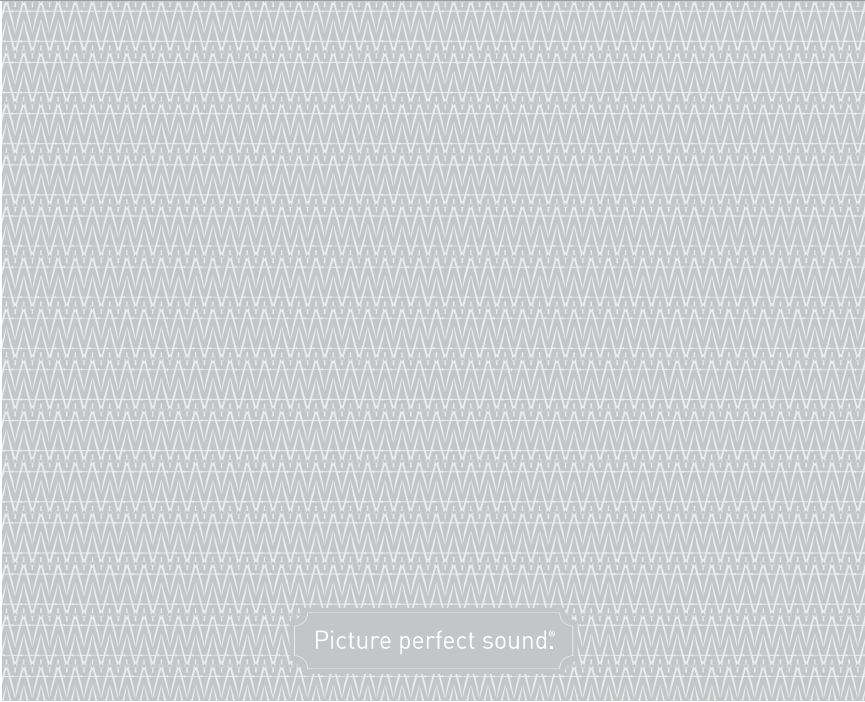
App Installation Instructions

App Installation Instructions

FOR CI DEALER ASSISTANCE CALL: 1 (866) 924-7669 | MON-FRI 8AM-6PM PST
FOR END USER ASSISTANCE PLEASE CONTACT YOUR DEALER



715 W. Ellsworth Road Ann Arbor, Michigan 48108 | 1.888.213.5015 | www.leonspeakers.com



Picture perfect sound.®

REF-25-133_Sony_Art_Frame_Gallery_20241031