

# ELAC

## REFERENCE

### SUBWOOFERS

**POWERFUL**  
**BOLD**  
**DYNAMIC**



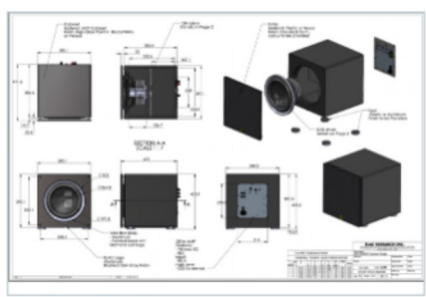
## TOTAL PERFORMANCE

### Begins With Design

*Eliminate the challenges of placement with ELAC's AUTO EQ*

This powerful subwoofer series features an advanced 2-layer High Excursion (HEX) design, providing a dynamic low-end response and room-filling sound. The high-quality amplification technology delivers incredible power with professional-grade audio clarity, so you get every punch and beat with maximum impact. Crafted with carefully selected materials, these new subwoofers are engineered for remarkable sound quality and excellent durability. A stylish and modern design makes it a beautiful addition to any home. Get ready to experience music and movies like never before!

### PRODUCT DETAILS



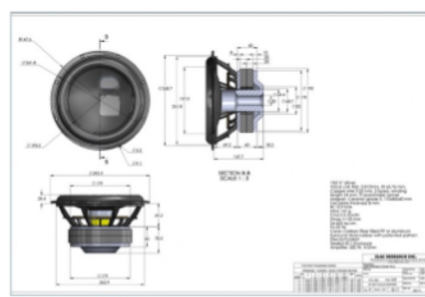
#### Custom Design

Satin-painted, elegant, and acoustically balanced 35mm cabinet. Damped and internally braced to eliminate unwanted resonance for maximum performance.



#### Custom Amplifier

Powerful BASH amplifier with Dual 4-channel DSP and 32-Bit DACs. Built-in wireless receiver and BLE App control.



#### Custom Driver

Aluminum sandwich cone with a large 2.5" voice coil for increased power handling and thermal management, resulting in higher output and SPL.



1938 N. Batavia Street Suite K  
Orange, CA 92865  
www.elac.com - info@elac.us



# ELAC

## FEATURES

## REFERENCE SUBWOOFERS

POWERFUL • BOLD • DYNAMIC

● **DSP** (Digital Signal Processor) – A dual 28-Bit DSP with a 147MHz master clock frequency is utilized to process audio signals with high accuracy and minimum latency.



● **Hex Technology** – surround geometry allows for a very linear relationship between applied force and resulting displacement in both directions. This ensures faithful reproduction of the recorded signal with low distortion even at high playback volumes.

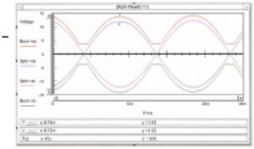


● **Aluminum Sandwich Woofer** – These new high excursion woofers utilize a rigid and lightweight aluminum cone sandwiched between two treated paper cones using a unique gluing process. This method retains the transient benefits of cellulose cones with the torsional rigidity of aluminum and allows for exceptionally long cone throws for better handling of high signal levels and low bass.



● **Large Diameter Voice Coils** – Both Reference Series subwoofers feature a large 2.5" voice coil for increased power handling and thermal management resulting in higher output and SPL.

● **BASH Amplifier** – This new amplifier uses a modulated switched mode power supply allied to a conventional class AB amplifier.



Switching at more than 400,000 times per second, the supply tracks the incoming audio signal to ensure that the Class AB amplifier gets only the voltage necessary (with a little headroom) to cope with today's dynamic movie and music content, thus maximizing the efficiency and potential of the amplifier.

● **Advanced APP Control** – Doing away with traditional analog controls, our new Reference Series Subwoofers incorporate our advanced digital control system. Simply download the ELAC Sub Control 3.0 app for your Android or iOS phone or tablet and you have complete control of multiple subwoofers from the comfort of your sofa.



● **Auto Room EQ** – Finding the perfect location for your subwoofer can be difficult or just not visually appealing. Utilizing our new Sub Control 3.0 app and your smartphone microphone, the subwoofer will optimize room EQ automatically, allowing greater flexibility in placement without sacrificing performance.

● **Wireless Ready** – All Reference Series Subwoofers have a wireless receiver built-in. Simply add the optional AirX2 Wireless transmitter, connect it to your AV receiver, and you can wirelessly transmit subwoofer information to up to 3 Reference Subwoofers simultaneously.



1938 N. Batavia Street Suite K  
Orange, CA 92865  
www.elac.com - info@elac.us



# ELAC

## SPECIFICATIONS

## REFERENCE SUBWOOFERS

POWERFUL • BOLD • DYNAMIC

	RS500-SB	RS700-SB
SPEAKER TYPE	SEALED	
WOOFER (SANDWICH ALUMINUM)	10" HEX SURROUND	12" HEX SURROUND
FREQUENCY RESPONSE (ANECHOIC)	18HZ TO 150HZ	17HZ TO 150HZ
FREQUENCY RESPONSE (IN ROOM)	15HZ TO 150HZ	14HZ TO 150HZ
MAXIMUM OUTPUT LEVEL, SPL DB/1M ANECHOIC	108 dB	111 dB
LOW PASS CROSSOVER, HZ	40HZ TO 150HZ	40HZ TO 150HZ
AMPLIFIER POWER, @4 OHM (RMS/PEAK)	500/1000 WATTS	700/1400 WATTS
APP CONTROLLED (BLE)	IOS AND ANDROID	
AMPLIFIER TOPOLOGY	BASH	
STANDBY POWER CONSUMPTION	< 2.0W	
INPUTS	RCA LINE LEVEL, SPEAKER LEVEL	
12 VOLT INPUT	12 VOLT TRIGGER	
DATA CONNECTION	USB (FIRMWARE UPDATE)	
ETHERNET	THIRD PARTY CONTROL	
CABINET FINISH	SATIN BLACK	
ACCESSORIES INCLUDED	GRILLE, AC POWER CORD, SPIKES	
HEIGHT	381 MM	437 MM
WIDTH	360 MM	416 MM
DEPTH	387 MM	418 MM
Net Weight	20.8 KG	25.3 KG



1938 N. Batavia Street Suite K  
 Orange, CA 92865  
[www.elac.com](http://www.elac.com) - [info@elac.us](mailto:info@elac.us)



# ELAC ANATOMY

## REFERENCE SUBWOOFERS POWERFUL • BOLD • DYNAMIC



1938 N. Batavia Street Suite K  
Orange, CA 92865  
[www.elac.com](http://www.elac.com) - [info@elac.us](mailto:info@elac.us)





**“ DURABLE AND STRONG ”**



1938 N. Batavia Street Suite K  
Orange, CA 92865  
[www.elac.com](http://www.elac.com) - [info@elac.us](mailto:info@elac.us)

