

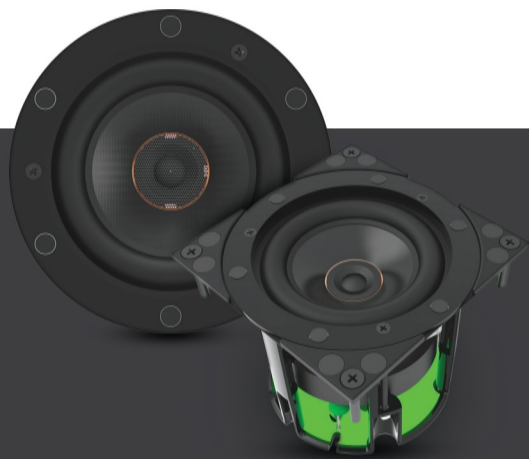


Vertex™ Series I In-ceiling Speakers

We understand the importance of having audio to enhance a living space, with minimal aesthetic intrusion.

The easily installed Vertex Series I speakers utilize the same components throughout the series to ensure a perfect sonic match across the line.

Keeping with our philosophy of delivering great sound, Vertex series I speakers will compliment any environment.



Recognized around the world for manufacturing speakers with exceptional build quality and unmatched performance, ELAC continues to deliver with our new Vertex Series of speakers.

VERTEX™ SERIES I IN-CEILING SPEAKERS

Custom Silk-Dome Tweeter

Custom silk dome tweeters have been developed for low mass and smooth, extended high frequency response

Custom-designed Woofers with Polypropylene Cone

Polypropylene is employed due to its improved internal damping and smooth high frequency roll-off

Intricate Crossover

A custom multi-element crossover with audio-grade components is implemented to ensure smooth transition between the drivers

Slim Profile

A slim profile paintable magnetic grill allows for the speaker to virtually disappear in the room

Accessory Products

Optional square grill adapters are available to cosmetically match square lighting. Optional pre-construction brackets are available to aid in installation or use in ceiling tile applications.



SPECIFICATIONS	IC-V31-W	IC-V61-W	IC-V81-W
	In-ceiling Vertex I 3.8" Speaker	In-ceiling Vertex I 6.5" Speaker	In-ceiling Vertex I 8" Speaker
Speaker type	2-way, rear side open	2-way, rear side open	2-way, rear side open
Tweeter	3/4-inch soft dome	1-inch soft dome	1-inch soft dome
Woofers	3.8-inch polypropylene cone	6.5-inch polypropylene cone	8-inch polypropylene cone
Crossover frequency	3,000 Hz	3,000 Hz	2,800 Hz
Frequency response	76 to 20,000 Hz	45 to 20,000 Hz	40 to 20,000 Hz
Sensitivity	87 db at 2.83 v/1m	90 db at 2.83 v/1m	90 db at 2.83 v/1m
Recommended amplifier power	30 to 100 Watts	30 to 120 Watts	30 to 120 Watts
Nominal/peak power handling	50/80 Watts	50/120 Watts	50/120 Watts
Nominal impedance	6 Ohm	6 Ohm	6 Ohm
Finish	Black baffle/White grille	Black baffle/White grille	Black baffle/White grille
Grille	Metal magnetic / Paintable	Metal magnetic / Paintable	Metal magnetic / Paintable
Accessories included	Cutout template, manual	Cutout template, manual	Cutout template, manual
Dimensions (diameter)	4.25 in / 108 mm	9.31 in / 236.5 mm	11.22 in / 285 mm
Cut-out (diameter)	4.00 in / 102 mm	8.11 in / 206 mm	10.00 in / 254 mm
Mounting depth	4.05 in / 103 mm	4.37 in / 111 mm	4.48 in / 114 mm

VERTEX™ SERIES | IN-WALL & THEATER IN-CEILING SPEAKERS

Custom Silk-Dome Tweeter

Custom silk dome tweeters have been developed for low mass and smooth, extended high frequency response

Custom-designed Woofers with Polypropylene Cone

Polypropylene is employed due to its improved internal damping and smooth high frequency roll-off

Intricate Crossover

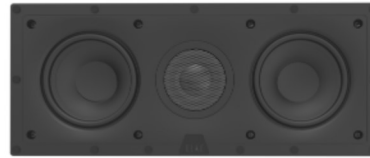
A custom multi-element crossover with audio-grade components is implemented to ensure smooth transition between the drivers

Slim Profile

A slim profile paintable magnetic grill allows for the speaker to virtually disappear in the room

Angled with Purpose (IC-VT61-W)

Both the woofer and soft dome tweeter are angled at almost 30 degrees providing a high-quality home theater experience from an in-ceiling speaker.



	IW-V61-W In-wall Vertex I 6.5" Speaker	IW-VC51-W In-wall Vertex I Centre 5.25" Speaker	IC-VT61-W In-ceiling Vertex I Theatre 6.5" Speaker
Speaker type	2-way, rear side open	2-way, rear side open	2-way, rear side open
Tweeter	1-inch soft dome	1-inch soft dome	1-inch soft dome
Woofer	6.5-inch polypropylene cone	2 x 5.25-inch polypropylene cone	6.5-inch polypropylene cone
Crossover frequency	3,000 Hz	2,200 Hz	3,000 Hz
Frequency response	45 to 20,000 Hz	45 to 20,000 Hz	45 to 20,000 Hz
Sensitivity	90 db at 2.83 v/1m	87 db at 2.83 v/1m	90 db at 2.83 v/1m
Recommended amplifier power	30 to 120 Watts	30 to 120 Watts	30 to 120 Watts
Nominal/peak power handling	50/120 Watts	50/120 Watts	50/120 Watts
Nominal impedance	6 Ohm	6 Ohm	6 Ohm
Finish	Black baffle/White grille	Black baffle/White grille	Black baffle/White grille
Grille	Metal magnetic / Paintable	Metal magnetic / Paintable	Metal magnetic / Paintable
Accessories included	Cutout template, manual	Cutout template, manual	Cutout template, manual
Dimensions	H: 12.69 in / 322.3 mm W: 8.48 in / 215.3 mm	H: 7.4 in / 188.3 mm W: 17.7 in / 448.3 mm	Diameter 10.4 in / 265 mm
Cut-out	H: 11.61 in / 295 mm W: 7.36 in / 187 mm	H: 6.2 in / 157 mm W: 16.4 in / 417 mm	9.52 in / 242 mm
Mounting depth	3.94 in / 100 mm	3.3 in / 84 mm	6.81 in / 173 mm