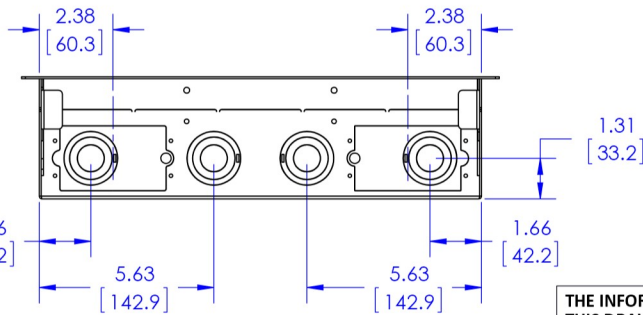
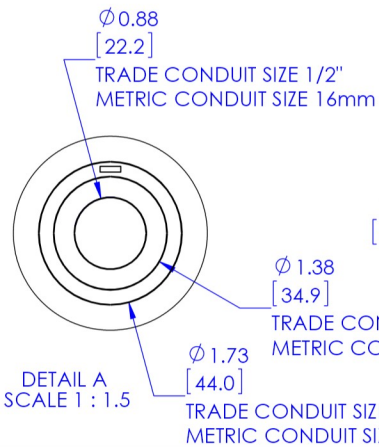
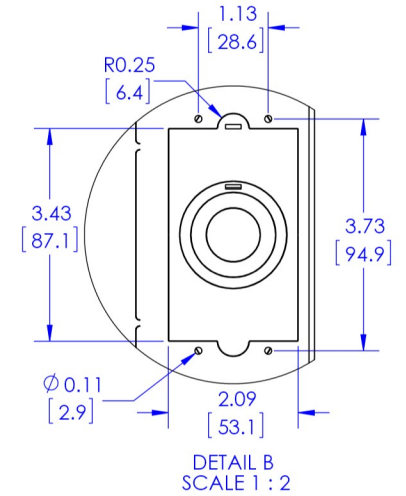
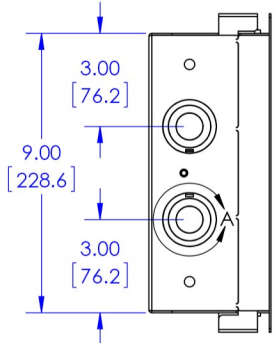
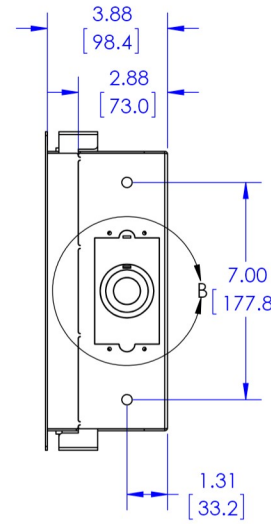
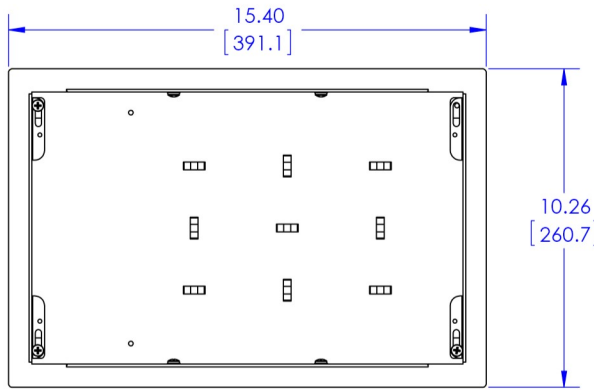
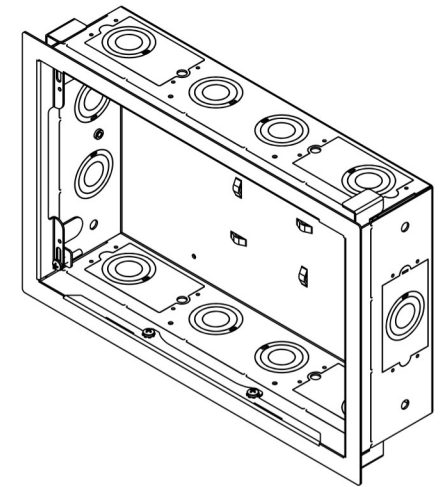
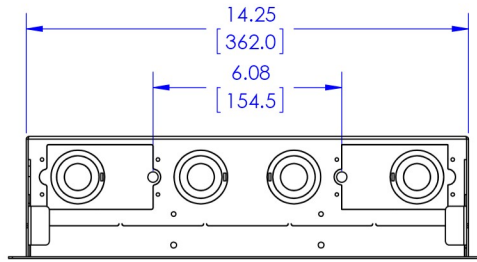


**RECOMMENDED ELECTRICAL BOX:  
RACO 560 3" X 2" BOX, 2 3/4" DEEP  
GANGABLE OR EQUIVALENT.**

**RECOMMENDED ELECTRICAL BOX  
COVER: RACO 864 SINGLE DUPLEX**



THE INFORMATION AND DESIGNS CONTAINED IN THIS DRAWING ARE CONFIDENTIAL AND THE PROPRIETARY PROPERTY OF MILESTONE AV TECHNOLOGIES NEITHER THIS DESIGN NOR ANY INFORMATION CONTAINED IN THIS DRAWING MAY BE REPRODUCED OR DISCLOSED TO OTHERS WITHOUT THE EXPRESS WRITTEN CONSENT OF MILESTONE AV TECHNOLOGIES.

|  |                |  |  |
|--|----------------|--|--|
| CAD GENERATED DRAWING. DO NOT MANUALLY UPDATE. |                | <p>6436 CITY WEST PKWY<br/>EDEN PRAIRIE, MN, 55344<br/>PHONE: 956-977-3901<br/>FAX: 977-894-6918</p> | DESCRIPTION:<br><b>PAC525F, WALL ENCLOSURE,<br/>W/FLNG, 16 X 9</b> |
| DRAWN BY                                       | HEF 12/23/2013 |  |  |
| ENG APPROVAL                                   |                | MODEL NO.  | PAC525F  |
| MFG APPROVAL                                   |                | SCALE  | 1:4  |
| QA APPROVAL                                    |                | SIZE   | B  |
| SHEET 1 OF 1                                   |                | DWG. NO.   | TECH-000536  |
|  |                |  | REV. 00  |