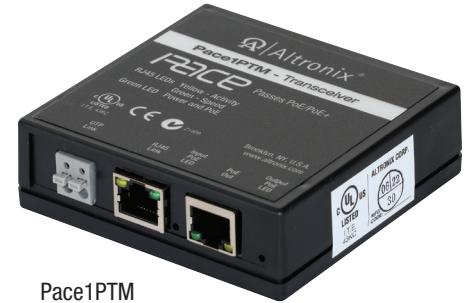


Pace1PTM

IP and PoE+ over Extended Distance CAT5e or UTP Transceiver



Altronix Pace1PTM is a long range Ethernet transceiver designed for use with Pace1PRM, Pace4PRM, Pace8PRM, and Pace16PRM receivers. They transmit data at 100Mbps full duplex and power via a single twisted pair (UTP - when paired with Pace1PRM) or CAT5e or higher cable in a PoE(+) compliant format. Pace1PTM will not deliver power to non-compliant devices, thus avoiding damage to improperly connected non-PoE cameras/devices. The receiver passes the PoE(+) compliant power over the cable to the Pace1PTM transceiver which, in turn, passes this power to an enabled IP camera/device. These plug and play units facilitate cost-effective solutions for IP devices that need to be installed at distances greater than 100m. They also provide a simple way to replace legacy analog products with new IP devices over single twisted pair (UTP) (when paired with Pace1PRM) or structured cable.



Pace1PTM

Key Features

- IEEE 802.3af (15W) and IEEE 802.3at (30W)
- Throughput is rated to pass 100Mbps
- Eliminates the costs and labor associated with installing new network cabling
- Retrofit digital IP cameras in an analog CCTV installation
- Auto detection and protection of legacy non-PoE cameras/devices
- Works with Megapixel, HD720, HD1080 & VGA (SD) cameras
- Extends Network link distance in an industrial environment
- Retrofit digital IP cameras in an analog CCTV CAT5e wired installations
- UL Listed in the U.S. and Canada
- CE European Conformity
- C-Tick Compliant
- Lifetime Warranty

Compatible Receivers:



Pace PRM Series Receivers

Up to Sixteen (16) Port IP and PoE+ Receivers

Transmit IP video/data over CAT5e up to 500m @ 100Mbps.

Support PoE (IEEE 802.3af) or PoE+ (IEEE 802.3at)

UL/cUL Listed (UL60950-1). CE and C-Tick Approved.

Lifetime Warranty

Specifications**Input**

Powered by Pace receiver

Ethernet

Connectivity: RJ45, auto-crossover

Wire type: 4-pair CAT-5 or a single twisted pair UTP

Distance:

CAT5e: up to 500m

UTP (paired with Pace1PRM only): up to 152m

Throughput is rated to pass 100Mbps of data.

With proper headend equipment multiple Megapixel cameras can be used

Speed: 10/100BaseT, half/full duplex, auto negotiation

Indicators (LED)

Green LED: PoE ON

Yellow and Green LED (by RJ45 jack):

IP Link status, 10/100Base-T/active

Agency Listings

UL/cUL

UL60950-1

(Information Technology Equipment)

CE

European Conformity

C-Tick Compliant

Physical and Environmental**Dimensions (W x L x H)**

Enclosure: 3.5" x 3.5" x 1" (88.89mm x 88.89mm x 25.4mm)

Shipping: 8" x 6" x 5" (203.2mm x 152.4mm x 127mm)

Weight (approx.)

Product: 0.25 lb. (0.11 kg)

Shipping: 0.42 lb. (0.19 kg)

Temperature

Operating: 15W: - 40°C to 75°C (- 40°F to 167°F)

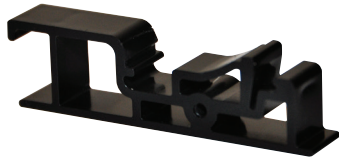
25W: - 40°C to 70°C (- 40°F to 158°F)

30W: - 40°C to 60°C (- 40°F to 140°F)

Storage: - 40°C to 70°C (- 40° to 158°F)

Relative Humidity 85% +/- 5%

Operating Altitude - 304.8 to 2,000m

Accessories**DCL2 - DIN Rail Mounting Clip**

Allows for easy installation of Altronix adapters utilizing screw mounting holes to mount on a standard DIN rail (Altronix Din Rail models D10, D12, D19, or D24).

Lifetime Warranty

Altronix Corporation | 140 58th St | Brooklyn, NY 11220 USA

phone: +1 718.567.8181 | fax: +1 718.567.9056 | email: info@altronix.com | www.altronix.com