

# Pace1PRMT



## IP and PoE+ over Extended Distance CAT5e or UTP Solution

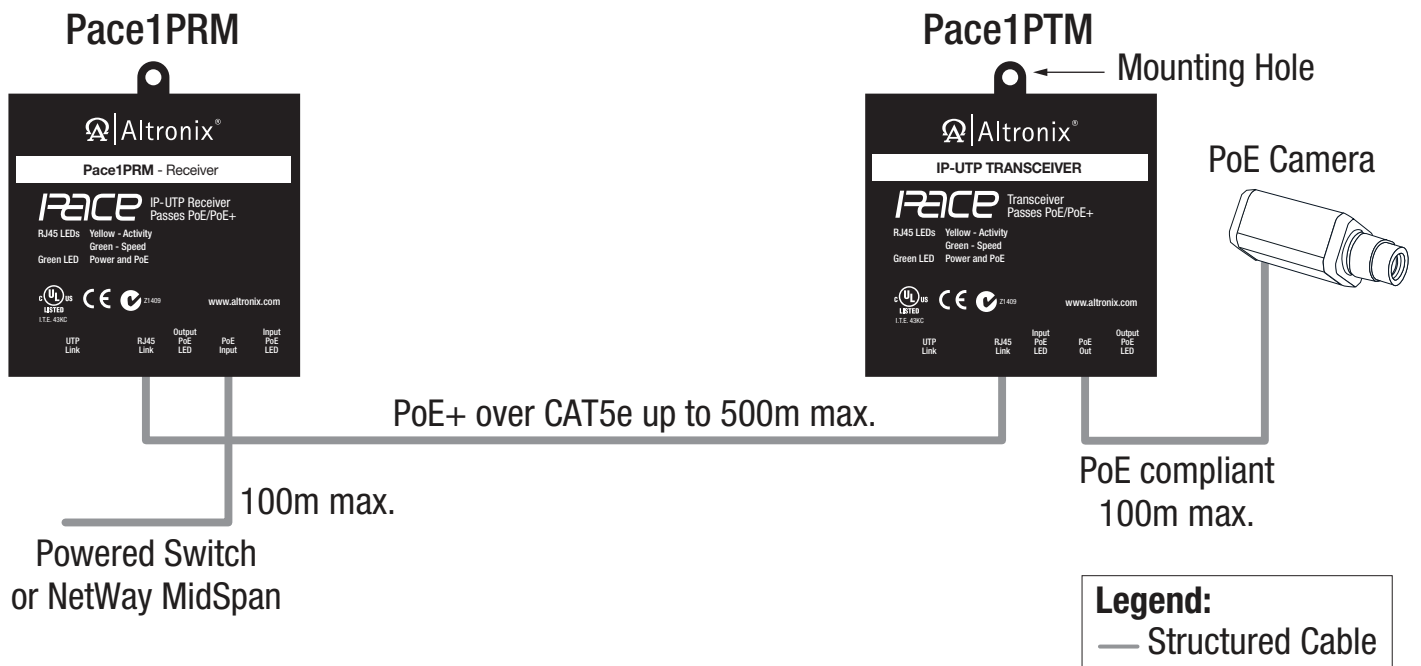
Altronix Pace1PRMT is a long range Ethernet adapter kit which transmits data at 100Mbps full duplex and power via a single twisted pair (UTP) or CAT5e or higher cable in a PoE(+) compliant format. Pace1PRM receiver is powered via a PoE midspan, such as the Altronix Netway series, or by an endspan. The receiver passes the PoE(+) compliant power over the cable to Pace1PTM transceiver which, in turn, passes this power to an enabled IP camera/device. These plug and play units facilitate cost-effective solutions for IP devices that need to be installed at distances greater than 100m. They also provide a simple way to replace legacy analog products with new IP devices over single twisted pair (UTP) or structured cable.



### Key Features

- IEEE 802.3af (15W) and IEEE 802.3at (30W)
- Throughput is rated to pass 100Mbps
- Eliminates the costs and labor associated with installing new network cabling
- Retrofit digital IP cameras in an analog CCTV installation
- Auto detection and protection of legacy non-PoE cameras/devices
- Works with Megapixel and VGA cameras
- Extends Network link distance in an industrial environment
- Retrofit digital IP cameras in an analog CCTV CAT5e wired installations
- UL Listed in the U.S. and Canada
- CE European Conformity
- C-Tick Compliant
- Lifetime Warranty

### Typical Application



### Lifetime Warranty

## Pace1PRMT

IP and PoE+ over Extended Distance CAT5e or UTP Solution



### Specifications

#### Input

- Pace1PRM:** Powered by midspan or endspan  
PoE compliant to IEEE 802.3af (15W) and  
PoE+ compliant to IEEE 802.3at (30W)
- Pace1PTM:** Powered by Pace1PRM

#### Ethernet

- Connectivity: RJ45, auto-crossover  
Wire type: 4-pair Cat-5 or a single twisted pair UTP  
Distance:  
CAT5e: up to 500m  
UTP: up to 152m
- Throughput is rated to pass 100mbps of data.  
With proper headend equipment multiple Megapixel  
cameras can be used  
Speed: 10/100BaseT, half/full duplex, auto negotiation

#### Indicators (LED)

- Green LED:** PoE ON  
**Yellow and Green LED (by RJ45 jack):**  
IP Link status, 10/100Base-T/active

#### Agency Listings

- UL/cUL** UL60950-1  
(Information Technology Equipment)
- CE** European Conformity
- C-Tick compliant.**

#### Physical and Environmental

##### Dimensions (W x L x H)

- Enclosures (Pace1PRM and Pace1PTM):  
3.5" x 3.5" x 1" (88.89mm x 88.89mm x 25.4mm)  
Shipping: 8" x 6" x 5" (203.2mm x 152.4mm x 127mm)

##### Weight (approx.)

- Product:** 0.4 lb. (0.18 kg)  
**Shipping:** 1 lb. (0.45 kg)

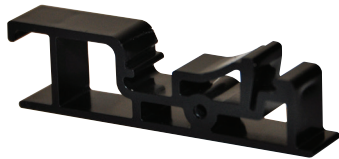
##### Temperature

- Operating:**
- Pace1PRM:** - 20°C to 49°C (- 4°F to 120.2°F)
- Pace1PTM:** 15W: - 40°C to 75°C (- 40°F to 167°F)  
25W: - 40°C to 70°C (- 40°F to 158°F)  
30W: - 40°C to 60°C (- 40°F to 140°F)
- Storage:** - 40°C to 75°C (- 40° to 167°F)

**Relative Humidity** 85% +/- 5%

**Operating Altitude** - 304.8 to 2,000m

### Accessories



#### DCL2 - DIN Rail Mounting Clip

Allows for easy installation of Altronix adapters utilizing screw mounting holes to mount on a standard DIN rail (Altronix Din Rail models D10, D12, D19, or D24).

#### Lifetime Warranty